



Small Fettler's Shed (doors open) - N Scale

INTRODUCTION

These sheds are located all over the state to provide storage facilities for track maintenance equipment and materials. Each gang has a section of track allocated to them to keep in good condition. These sheds often have a lot of clutter around them including large drums filled with dog spikes, etc. The shed in this kit is of the small shed which has a storage area for a drum mounted on a stand in the poison store, the tool shed has a bench and a tool rack while the third area is for the storage of a Fettler's trike, a small vehicle they use to ride along the tracks doing their inspection and carrying their gear.

PAINT SCHEMES

Being made from corrugated iron they are not painted but weather as they age. A black or grey wash for the walls simulates the aged finish, old silver for the roof and a concrete colour for the apron in front of the shed. The frames often got covered with oil and other liquids and turned black. After assembly is completed the model should be weathered with dust, grime, rust, etc.

Painting is best done before assembly, while still connected to the sheet, using a wash technique to both sides, this avoids using the wash method after completion of the shed to find that the glue has got on the outer surface and prevents the wash from taking.

BEFORE ASSEMBLING

The kit is comprised of 0.4mm plywood, joints can be made using a PVA woodworking glue such as "Selleys Aquadhere". The plywood pieces need to be cut away from the sheet, there are two tabs, one in the bottom left corner and one in the top right corner of each piece, these are best seen from the back of the sheet, cut carefully with a small saw or cut with a scalpel and straight edge.

ASSEMBLY

1. Glue an end wall piece to an end frame to form the outer wall of the trike shed. Glue another end frame to an end wall piece to form the inner wall between the trike shed and the tool shed. Repeat this process for the other two end wall pieces.
2. Cut the double doors away from the front wall fret, glue the frame for the doors to the inside of the fret.
3. Repeat the above process for the tool shed and the poison shed doors if they are required to be left open.
4. Glue the floor to the sub floor, then glue the end walls to the floor and repeat with the back wall. Glue the back wall frame to the back wall, butting up to the end wall. Glue the inner walls and frames in place against the back wall frame.
5. Glue the front wall in place and then the roof. Finally glue the doors in the open position as required. Glue some small timber or brass strip to represent the rails over the sub floor sleepers.

PLACEMENT

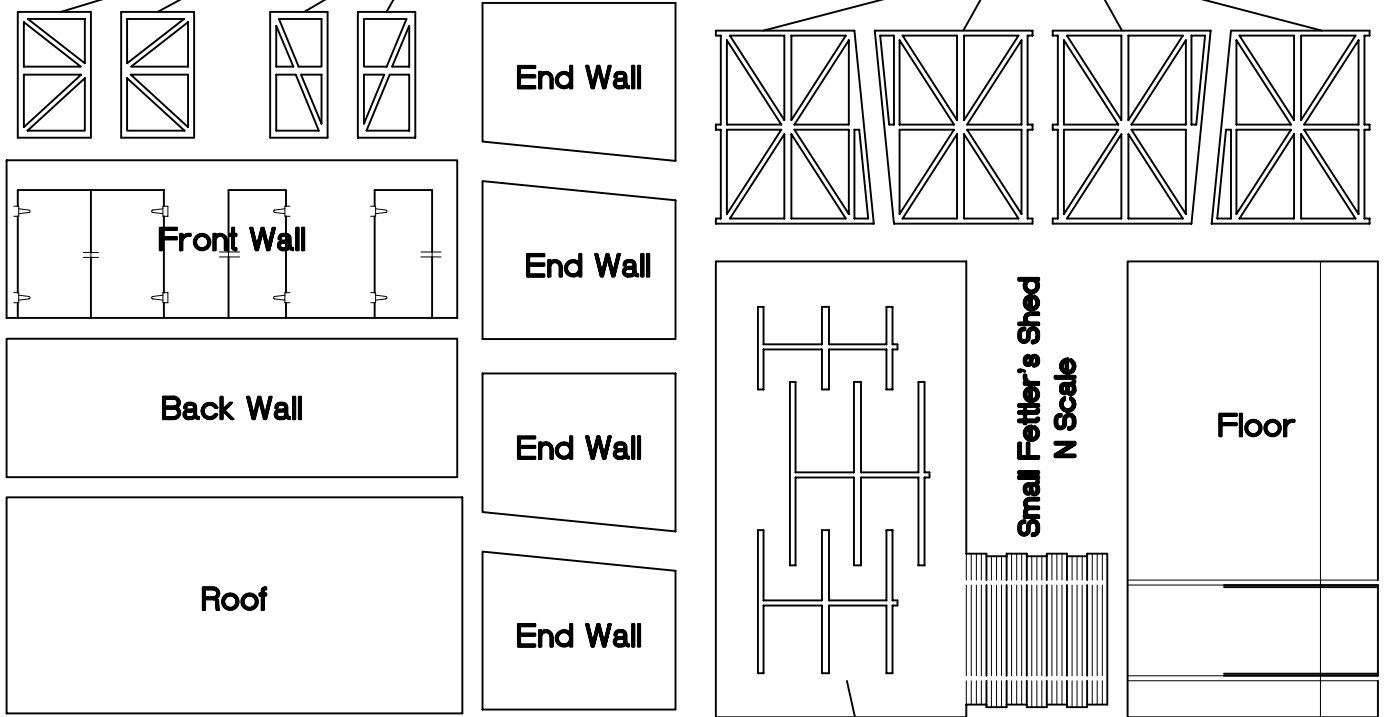
Mount your completed Fettler's Shed onto your railway layout. They should be ten scale feet from the closest rail to the front of the shed.

Please refer to our website www.drbworkshops.com.au for photos of completed models and for more prototype information.

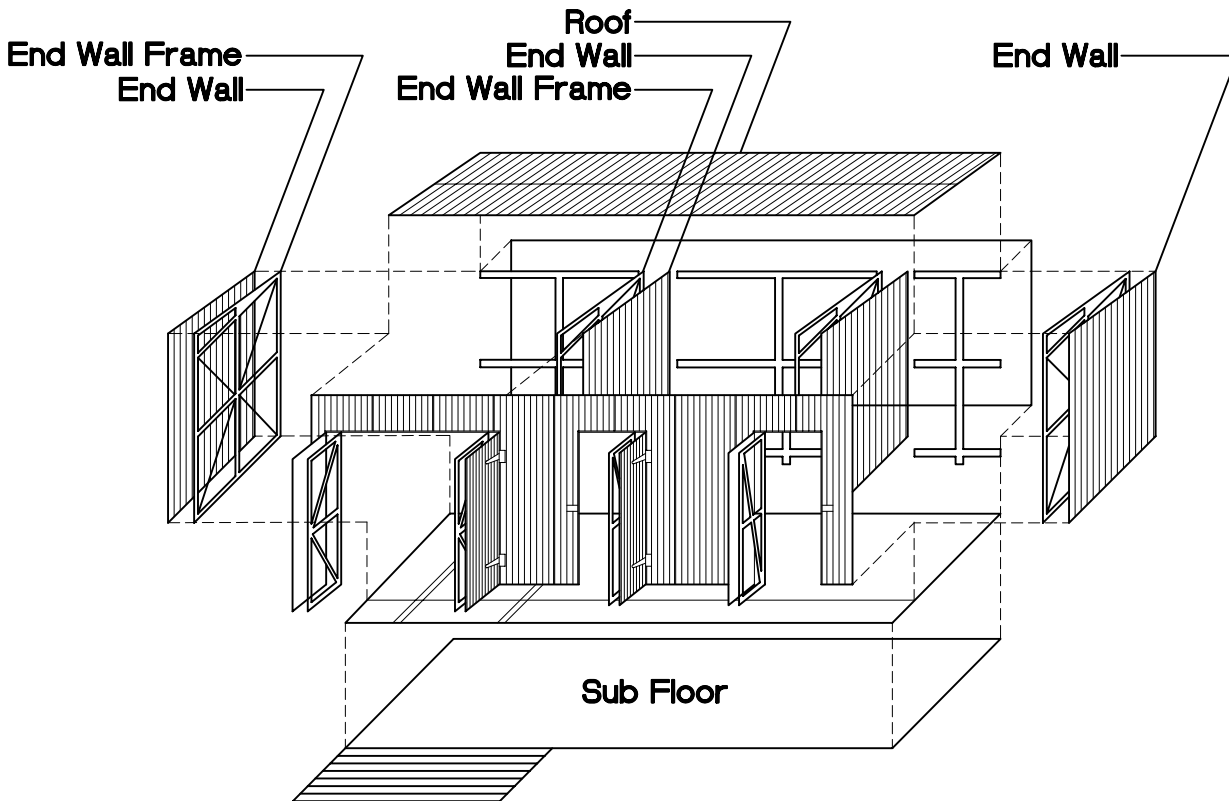
Double Door Frames

Single Door Frames

End Wall Frames



Sub Floor and Back Wall Frames



General Arrangement



Large Fetter's shed at Bredbo NSW

Photo by Glenn Watson

