



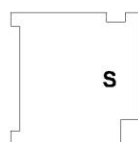
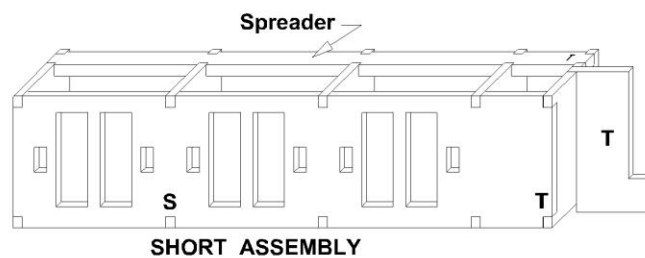
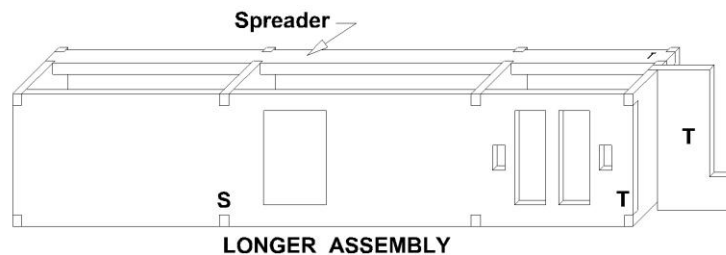
Compartment Inserts for Trax/Powerline BSR

To remove the roof/window assembly apply light pressure to one of the four clips on one side of the window glazing while applying light pressure to lift the roof off, continue with the next clip and so on until the roof/window section comes out of the body.

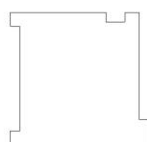
The longer acrylic compartment piece contains the buffet, glue the dividers into the long face. The divider with the letter T is located at the toilet end of the insert. The spreader is glued onto the dividers to give rigidity to the assembled insert.

The same procedure applies to the smaller insert for the other end of the car, but there is three compartments in this end of the car. The divider with the letter S has a step to clear the mouldings in the Trax/Powerline BSR body.

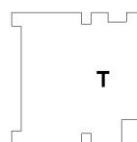
Once the inserts have been assembled they can be painted to simulate wood colour and glued in place in the car and the roof/window assembly re-installed.



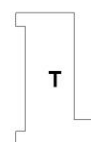
STEPPED
DIVIDER
2 off



STANDARD
DIVIDER
5 off



TOILET
DIVIDER
2 off



TOILET
WALL
2 off