



Red Telephone Box - Tasman Flag kit

INTRODUCTION

The red wooden telephone box was an iconic feature of Australian cities and towns from the 1930s.

Over its long lifetime the red telephone box had a few variations. This kit represents the first, called the Tasman Flag, which was introduced in 1933. They usually contained magneto-type telephones until the late 1930's when pre-decimal coin payphones and coin units (A/B coin units and Penny Long Tom coin units and phones) were used. Due to problems with overheating, they were replaced in the 1950s by the Tasman Vented Flag, which was produced until the 1970s. Also produced during this time were the dome-roofed red telephone boxes which had a different basic construction.

Red telephone boxes of all styles began disappearing from the 1970s as all new and replacement boxes were constructed of aluminium and glass. By the late 1980s they had virtually disappeared.

PAINT SCHEMES

The outside of the box was always painted bright red, usually with black stripe on the roof trim, although sometimes the entire main roof was painted black. The interiors were originally painted the same red as the exterior, but with a black ragging effect. In the 1960s a light green paint with a dark green ragging was introduced.

BEFORE STARTING

Refer to the diagram on page 3 to confirm that all pieces are included in your kit.

The kit is comprised of two laser-cut materials: acrylic and cardboard. For acrylic-to-acrylic joints, use a solvent glue such as dichloromethane e.g. Simply Glue's 'Tetra'. For cardboard-to-cardboard and cardboard-to-acrylic joints we recommend Selleys Acrylic Kwik Grip or similar. An effective bond can be used with the glue wet - waiting for two surfaces to dry was not necessary.

Painting is best done by airbrush but a similar effect can be achieved using spray cans to spray the light green or orange, then using a spray can of dark green or black and just gentle pressing the nozzle to get it to spit out the paint speckles.

Note that the self-adhesive labels are provided in multiples in case of accidents during cutting out or application!

For best results, gluing and painting should be done in the specified order as follows.

ASSEMBLY

1. Paint the front and horizontal part of the shelf and the inside of the cardboard shell. These can be either light green with dark green speckling or orange with black speckling, to suit the era modelled (see above).
2. Assemble the acrylic roof base and the four-piece riser: glue the cardboard main roof joining strip to one side of the join in the cardboard main roof, lining the fold line up with the cut edge of the cardboard main roof. When dry, glue the other side of the cardboard main roof to the joining strip; this should have the cardboard main roof to the correct shape.
3. Glue the small roof together to form its pyramid shape.

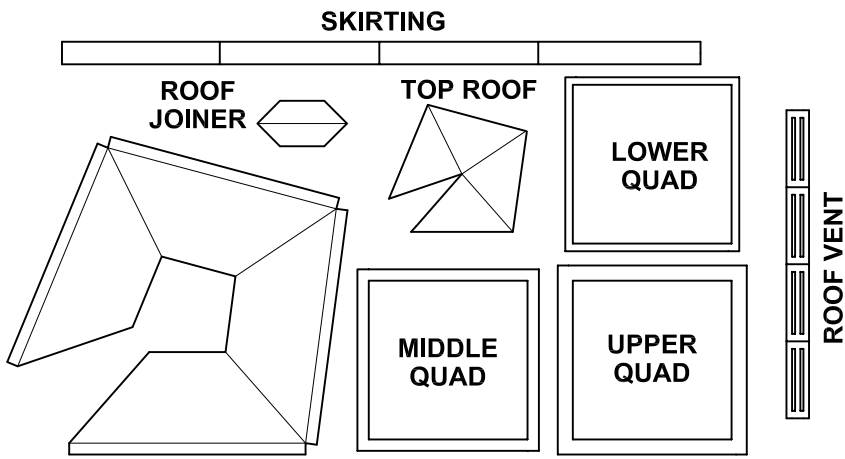
4. Glue the cardboard main roof to the assembled roof base by gluing the four vertical roof tabs to the edge of the acrylic roof base.
5. Glue the roof vent to the part of the riser that is above the cardboard main roof.
6. Glue the small roof to the top of the riser.
7. Glue the upper quad piece of cardboard to the middle quad then glue these to the lower quad using the Quad Jig supplied to align the three pieces.
8. Paint the outside of the cardboard shell, the just-assembled roof unit, the assembled quad unit and the skirting piece with pillar box red.
9. Paint the base to simulate a concrete slab; paint the floor to simulate polished hardwood flooring.
10. Carefully clean any marks and fingerprints from the acrylic parts that are left, as these will be conspicuous if not taken care of.
11. Cut out and apply the self-adhesive Information label onto the vertical part of the shelf where indicated.
12. Glue the selected telephone to the vertical part of the shelf.
13. Assemble SIDE A and the BACK, insert the shelf and phone into the slot in SIDE A and glue on SIDE B, making sure that the shelf fits into the slot in SIDE B.
14. Glue the rear of the vertical part of the shelf to the BACK with Selleys Acrylic Kwik Grip or similar, then glue the DOOR in place and the TOP.
15. Glue the roof assembly on top of the acrylic box.
16. Mask the acrylic box and paint the underside of the roof assembly pillar box red.
17. Cut out and apply the 'TELEPHONE' labels to the three large windows.
18. Glue the painted floor in place then glue the painted cardboard shell to the outside of the assembled acrylic box.
19. Slide the assembled and painted quad unit up over the box until it is touching the underside of the roof, and glue in place.
20. Paint the outside edge of the main roof with black paint.
21. Glue the base onto the four legs of the box and glue the skirting piece to the box at base level.

PLACEMENT

Mount your completed telephone box onto your railway layout. These early Tasman Flag boxes were often adjacent to buildings such as post offices. In more isolated locations they were often found adjacent to, and connected from, telephone poles.

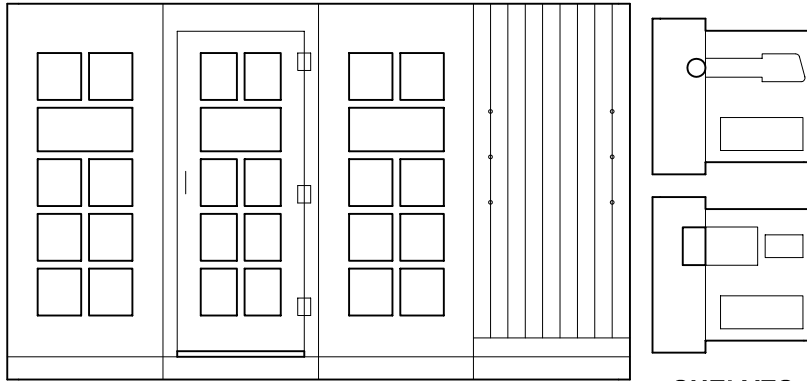
Please refer to our website www.drbworkshops.com.au for photos of completed models and for more prototype information.

Thanks to Justin O'Connor of www.redtelephonebox.net for his assistance with prototype information and to Ross Verdich, owner of the Binnabri layout, for allowing location photography.

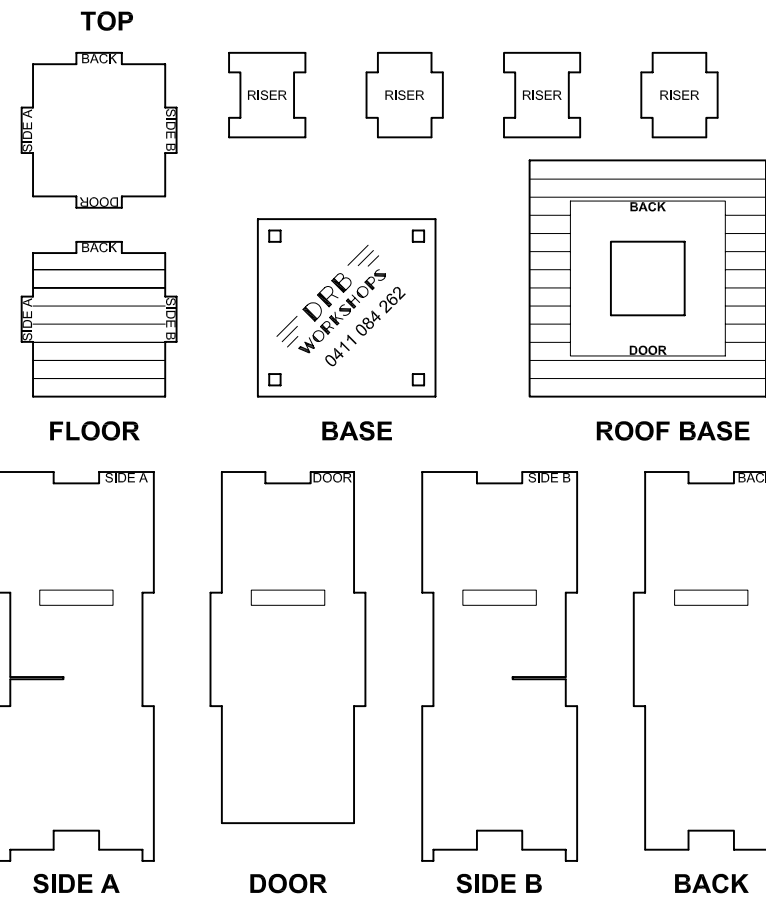


MAIN ROOF

TASMAN FLAG TELEPHONE BOX - O SCALE (1:43.5)



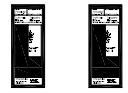
Red Cardboard



Clear Acrylic

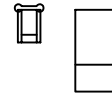


Telephone signs



Information signs

Self adhesive labels



'A B' COIN BOX

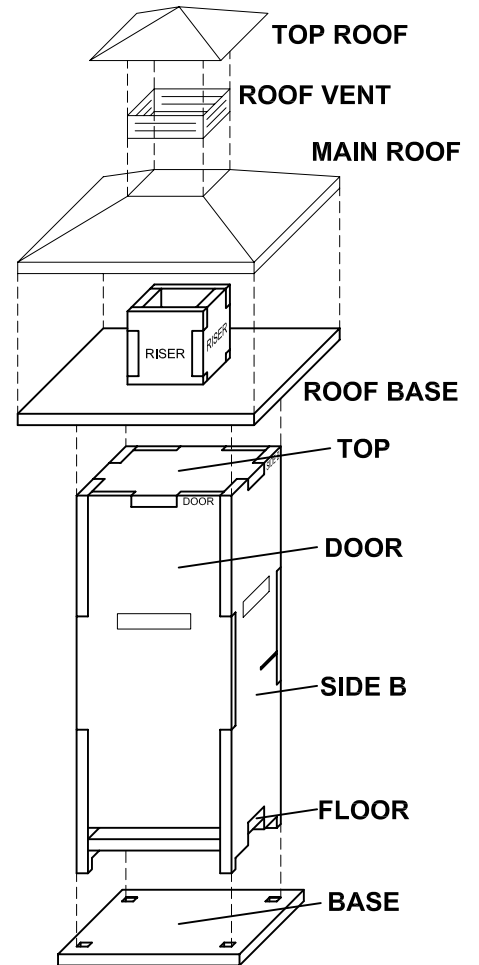


1d LONG TOM

Telephones

Cardboard Components

Acrylic Components



General Arrangement